



The Jaywick Tourist Board

Why not create your own tour of Jaywick and we'll put it on this website with the others. The best website tours, as judged by the website editor, will win a signed limited edition artwork ! It's a great way to let everybody know what you think are the best things about Jaywick. Or think of it as legitimate graffiti...

So follow the instructions and then send the website address of your tour to us at info@jaywicked.org

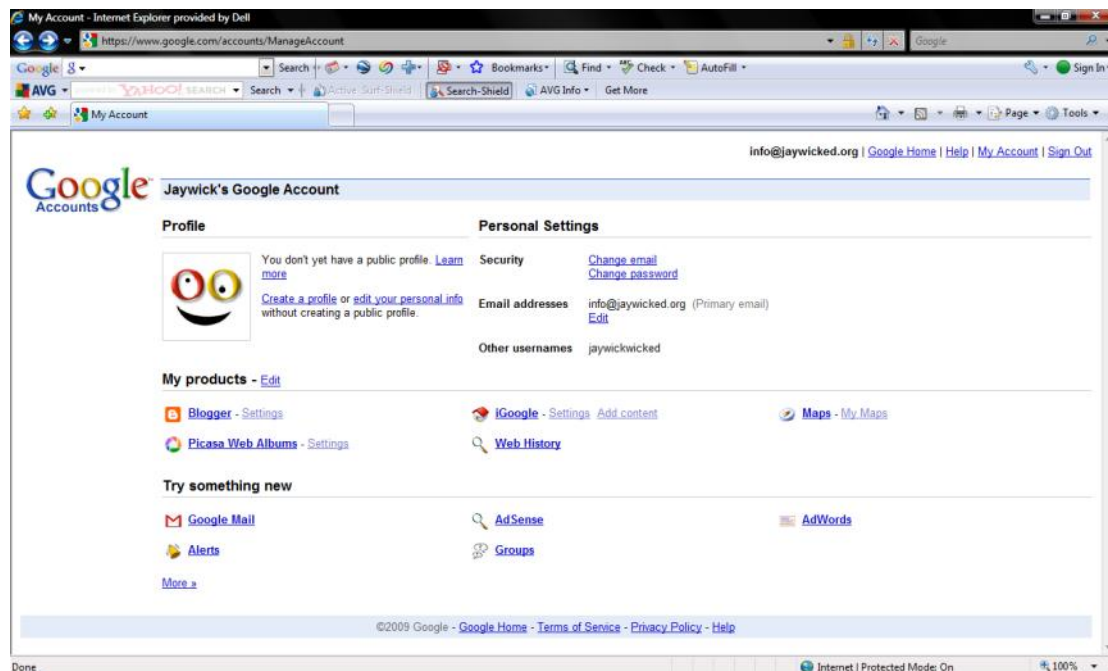
One way to create your own DIY tour of Jaywick

1. Firstly you'll need to sign up for a Google account here (you'll need an email address) <https://www.google.com/accounts/> You can now sign into to Google.
2. Now you need to sign up for a web based picture album so you can upload your pictures. The one that comes with Google is Picasa Web Album <http://picasaweb.google.com/home>.
3. Find the places or things you like in Jaywick and either take some digital photos or just write something down about them. Try to remember roughly where they are as we will be putting them on the map later. Put the photos onto Picasa Web Albums.
4. Don't forget that the images you put on the web will be able to be seen by everyone.

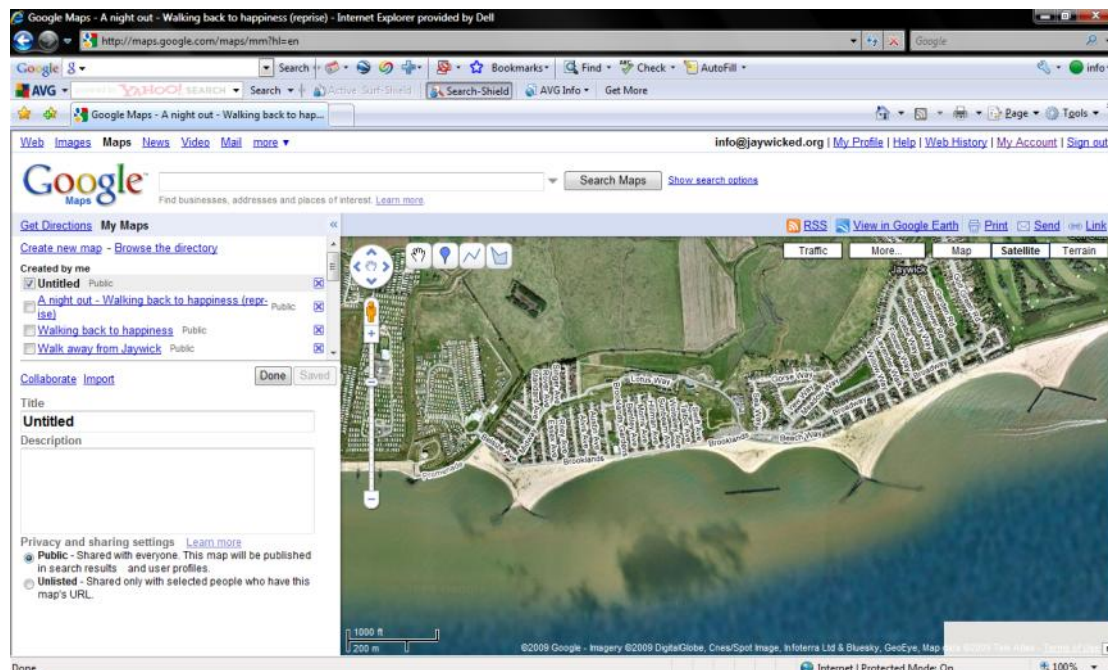
Now you're all set to make your tour.

Login to Google with your email address and password.

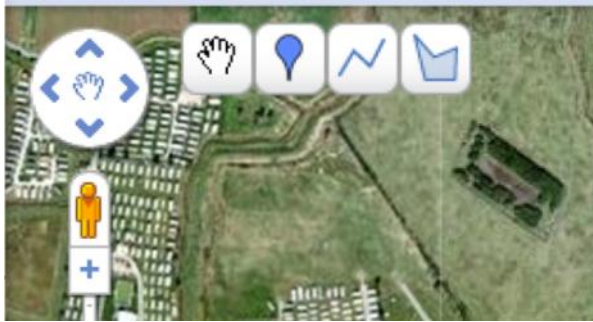
Click on the link that says “My Maps” (middle right of screen).



Now you should be able to find a link that says “Create New Map”. Give your new map a title and description if you like. Using the controls on the map navigate your way to where you want your tour of Jaywick to start using the arrows and the slider in the top left section of the map bit.



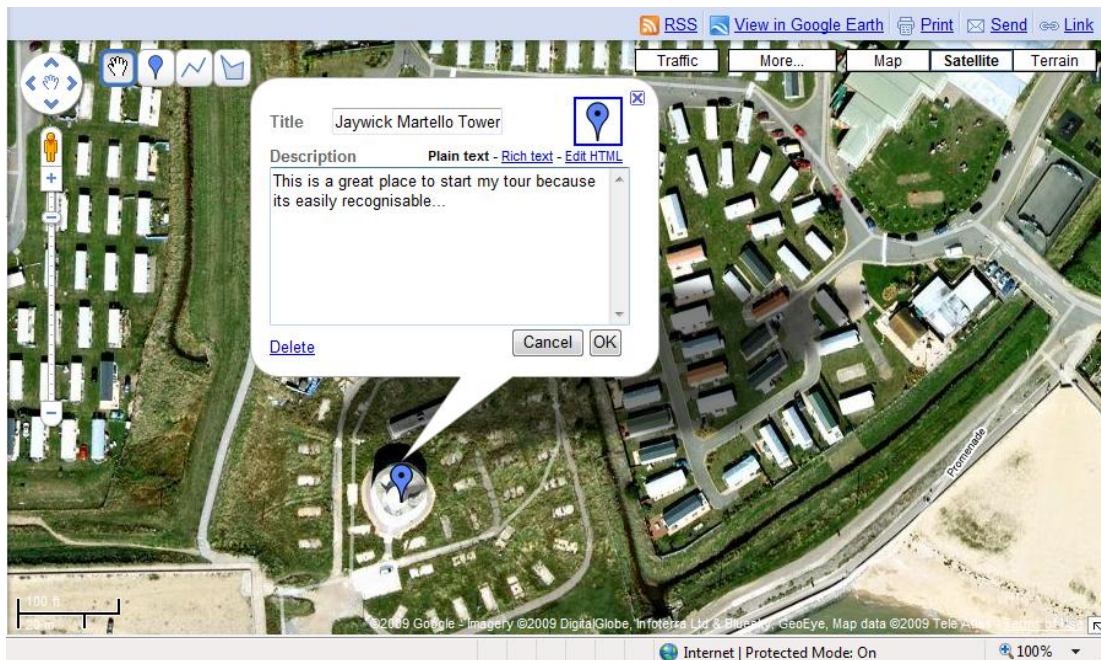
You can start adding in the pictures and text that you have collected that form the stops on your tour. In the top left of the map section there is a button which looks like a balloon which lets you “Add placemarks” to the map.



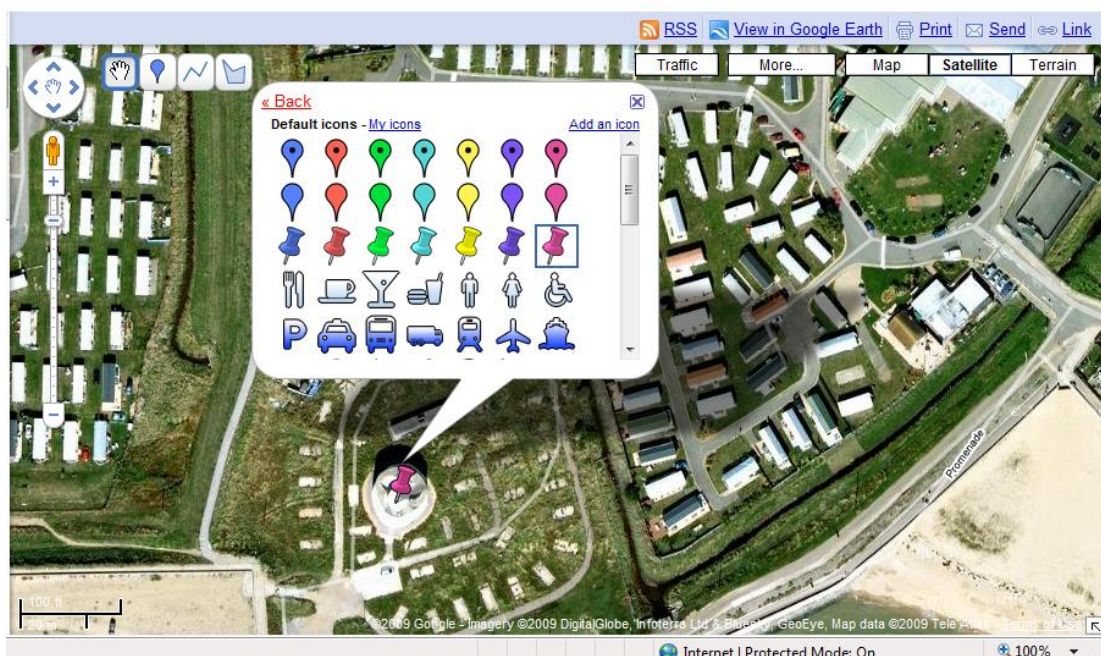
Click on the icon and then you can use your cursor to drop the Placemark on the start of your tour. In this case we are starting at the Jaywick Martello Tower. Just click when it's over there you want it to be.



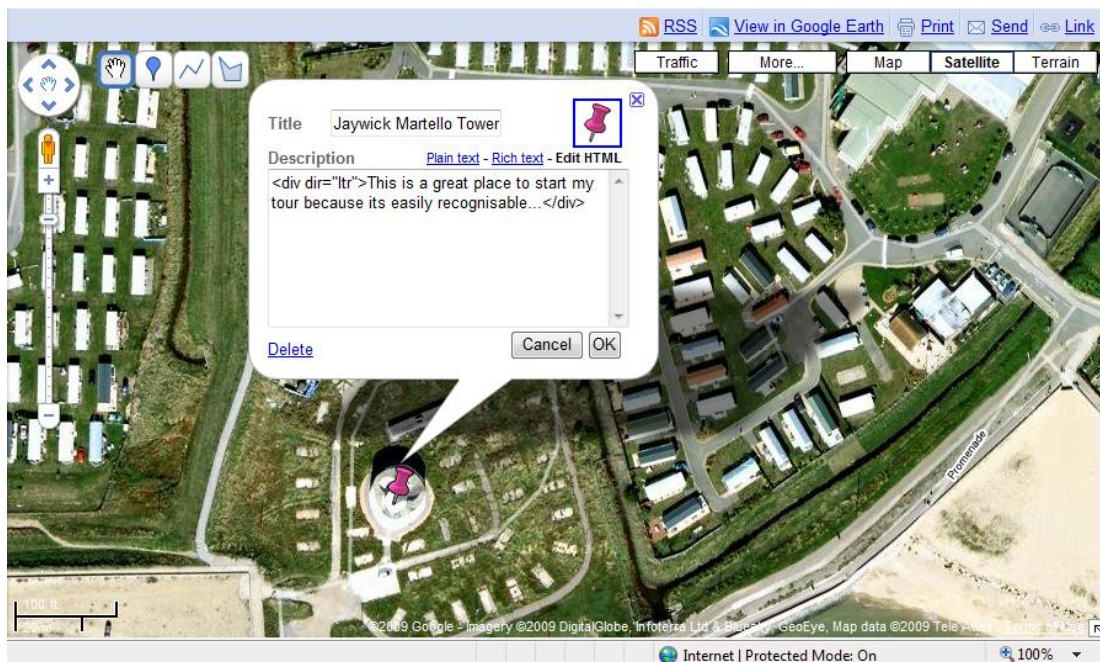
Now a bubble will appear which lets you add text and pictures to the place you have chosen on the map. With the option of “Plain Text “selected at the top of the bubble you can now type stuff in.



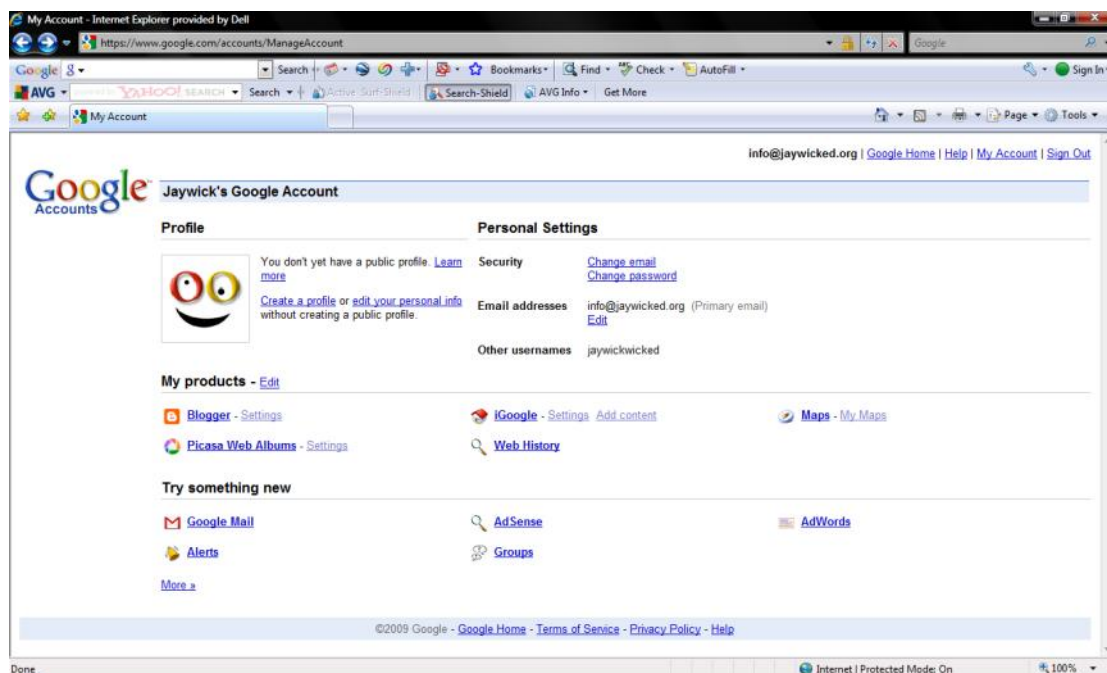
If you like, you can change the icon for Placemarks that appear on your map. Just click on the blue balloon shape in the top right of the bubble. This time we have selected a pink pin (click the link that says “Back” when you’ve finished).



Now we're going to add a picture to the bubble as well as our text. To do this you will need to select "Edit HTML" (located just under the pink pin symbol).

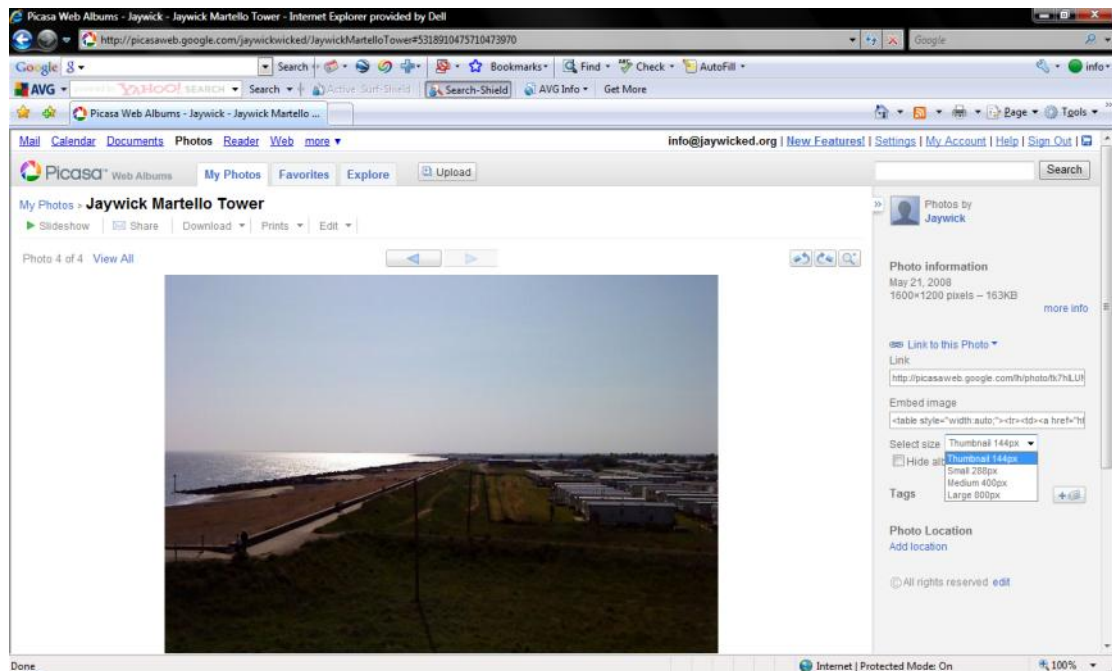


Now leave this widow **and in a new browser window** open up the starting page for your personal Google page again and click on Picasa Web Album.

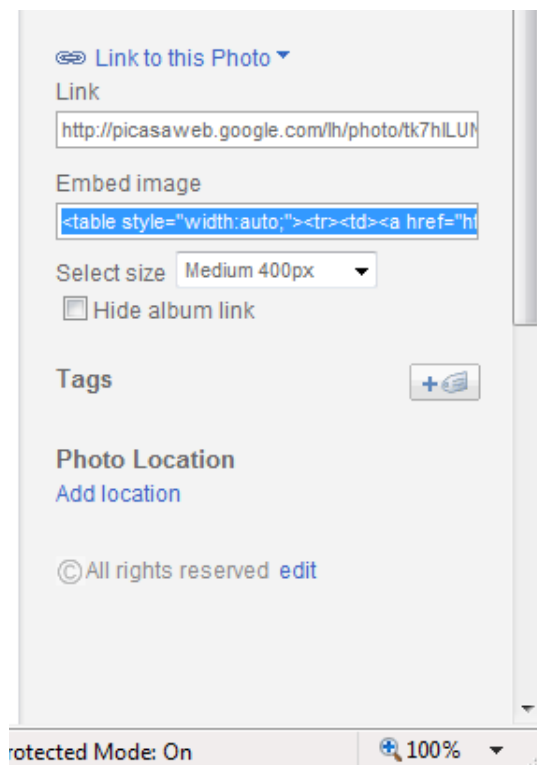


Hopefully you've already figured out how to upload your pictures (press the Upload button to start !) and have all the ones you want to use on the tour all ready. Find your way to the first picture you want to use.

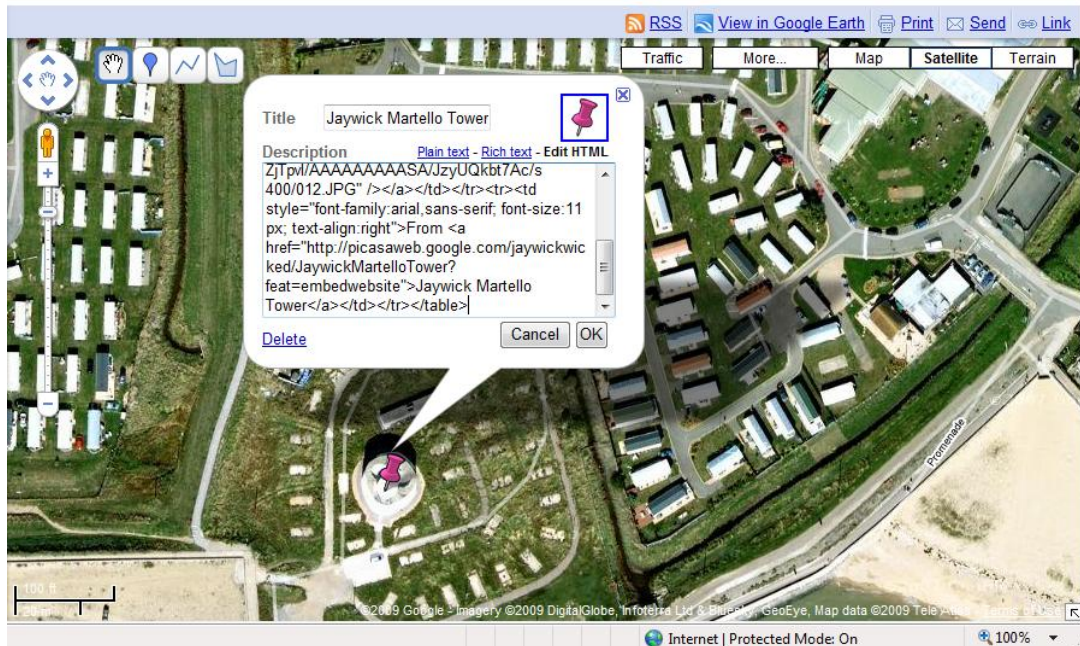
On the right hand side of the screen select how big you want the picture to appear in the Placemark bubble, try “Small” or “Medium” to start with.



You need to copy **all** of the text (it is a long bit of text that continues outside the box) that is under where it says “Embed image”. Once it is selected either press Ctrl + C or right click with your mouse to and select Copy.

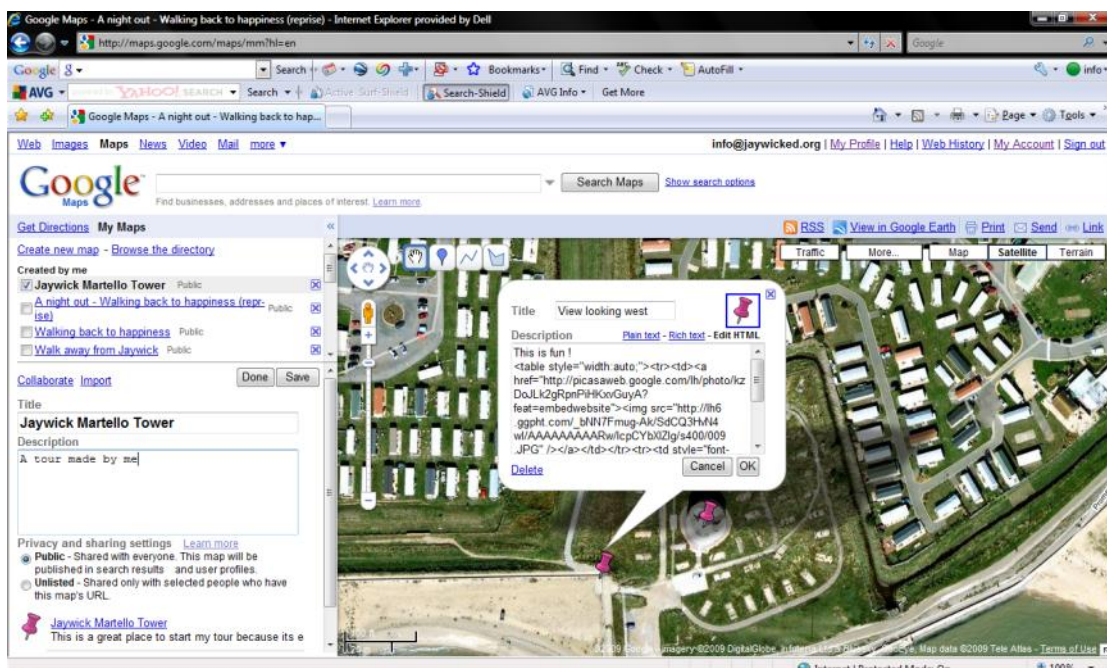


We now go back to the Google window we have left open with the bubble on it. Put your cursor at the end of the text we wrote and paste in the text we have just copied from Picasa Web Album.

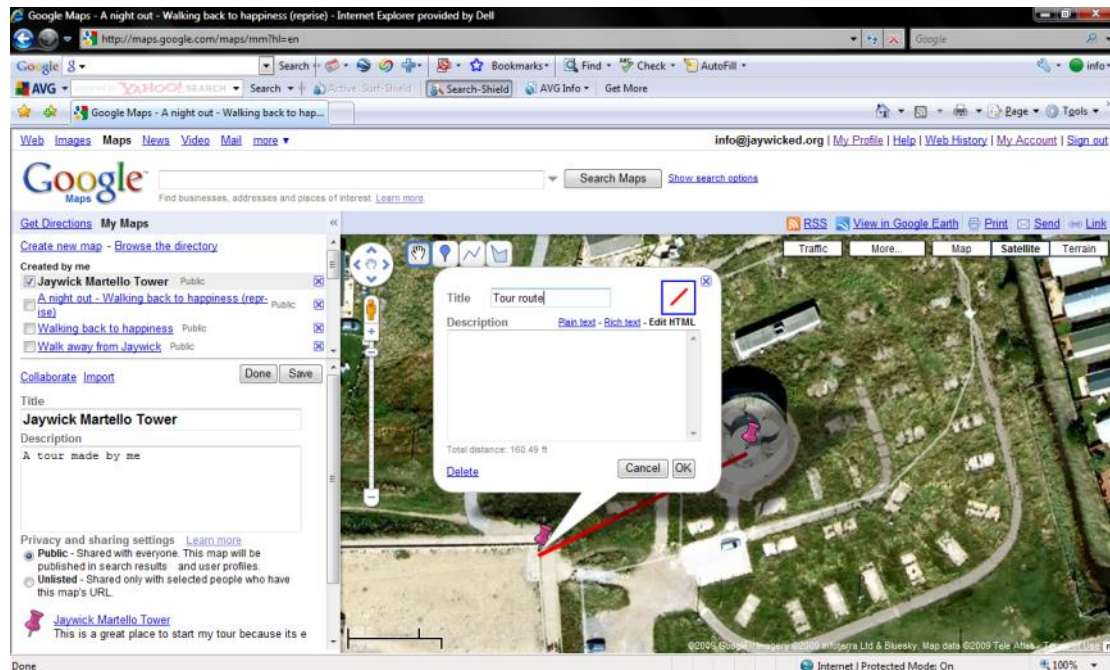


This text we copied is an HTML (the computer language that web browsers use) instruction to show the image in the bubble. Now just click the OK button at the bottom of the bubble.

Repeat the process above as often as you like to add in all the stops on your tour. You will see on the left hand side of the screen the points that you have added in will start to appear. If you want to go back and edit them at any point just click on the hyperlink for the Placemark. Every once in a while click on the "Save" button (middle left of screen) to make sure you don't lose your work.

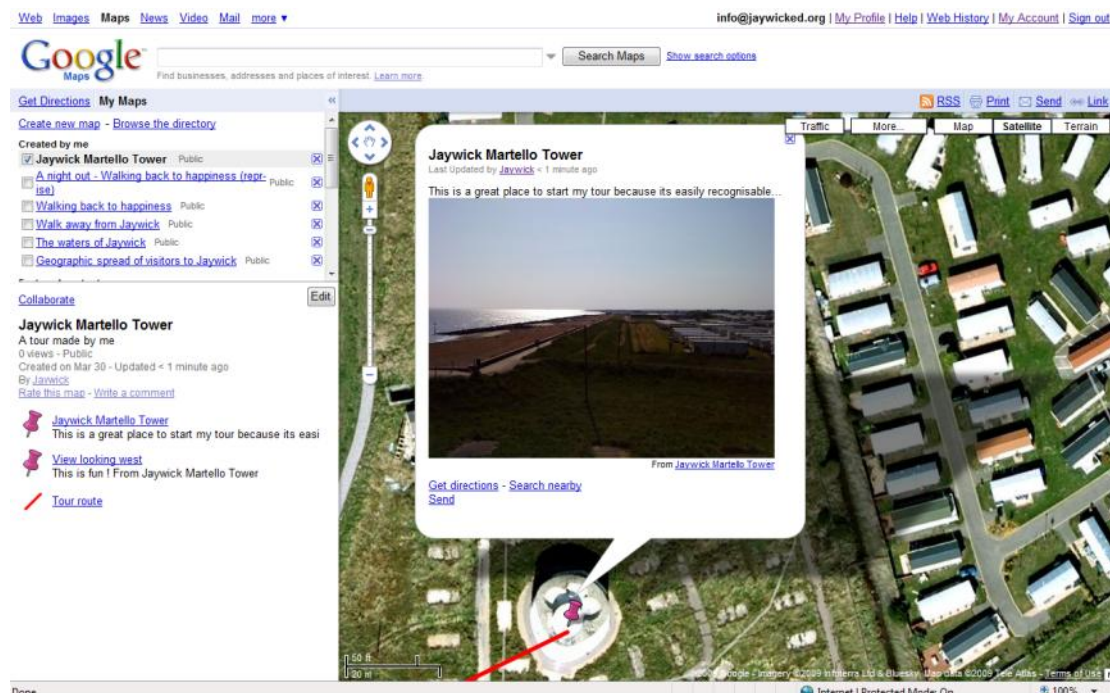


To make the tour look better on the maps you can join all of your points of interest together with a line. In the map section of the screen click on the icon “Draw a line” next to the Placemark icon. Now you can use the cursor to draw lines in between the Placemarks. Once you have ended the line you can choose its colour and intensity by clicking on the line icon on the bubble, and name it if you want.



On the middle left of the screen click the “Done” button. Click on the pins and you now see the picture you pasted in.

Once you have done this, you’re finished !



If you would like to send this tour map to anyone just click on the text that says “Link” which is at the top right of the map section. You can either paste the link into an email or you can use the HTML to put the map onto a website. Send either to info@jaywicked.org to be featured on our website www.jaywicked.org !

